

VAPE RECYCLING

DOING OUR PART

JOHNSON COUNTY
KANSAS

Health & Environment



SHAWNEE MISSION
SCHOOL DISTRICT

THE PROBLEM

WITH ABOUT ONE IN 4-5 HIGH SCHOOL STUDENTS USING E-CIGARETTES IN 2020, VAPING GENERATES A SIGNIFICANT AMOUNT OF TOXIC AND PLASTIC WASTE.

THERE HAS BEEN A 399.73% INCREASE IN RETAIL E-CIGARETTE SALES (EXCLUDING INTERNET SALES AND TOBACCO-SPECIALTY STORES) FROM 2015 THROUGH 2020, THE ENVIRONMENTAL CONSEQUENCES OF E-CIGARETTE WASTE ARE ENORMOUS.

ALMOST HALF (49.1%) OF YOUNG PEOPLE DON'T KNOW WHAT TO DO WITH USED E-CIGARETTE PODS AND DISPOSABLE DEVICES.



**SO WHERE DO USERS
DISPOSE OF
E-CIGARETTE WASTE?**



51% OF YOUNG E-CIGARETTE USERS REPORTED DISPOSING OF USED E-CIGARETTE PODS OR EMPTY DISPOSABLES IN THE TRASH

17% IN A REGULAR RECYCLING BIN NOT DESIGNED FOR E-CIGARETTE WASTE

10% REPORTED THEY SIMPLY THROW THEM ON THE GROUND

15% DROP THEM OFF/SEND THEM FOR ELECTRONIC RECYCLING

12% RETURN THEM TO A VAPE SHOP

32% KEEP/COLLECT THEM

10% SELL THEM

*Data were from a survey of 15-24-year-olds fielded February – June 2020 and included 3,757 participants. Participants could select more than one response to questions. 51% 17% 10% 15% 12% 32% 10%



WHAT'S IN IT?

**E-CIGARETTE WASTE IS POTENTIALLY A
MORE SERIOUS ENVIRONMENTAL THREAT
THAN CIGARETTE BUTTS SINCE
E-CIGARETTES INTRODUCE PLASTIC,
NICOTINE SALTS, HEAVY METALS, LEAD,
MERCURY, AND FLAMMABLE LITHIUM ION
BATTERIES INTO WATERWAYS, SOIL, AND
TO WILDLIFE.**



UNLIKE CIGARETTE BUTTS, E-CIGARETTE WASTE WON'T BIODEGRADE EVEN UNDER SEVERE CONDITIONS. E-CIGARETTES LEFT ON THE STREET EVENTUALLY BREAK DOWN INTO MICROPLASTICS AND CHEMICALS THAT FLOW INTO THE STORM DRAINS TO POLLUTE OUR WATERWAYS AND WILDLIFE.



The background is a solid red color with various abstract shapes and patterns. There are some darker red, leaf-like shapes in the corners and some lighter red, circular patterns. A white rectangular card is centered on the page, with a small brown tab at the top right. The card has a subtle, speckled texture. The text "HOW DO YOU DISPOSE?" is written in a bold, dark red, sans-serif font on the card.

**HOW DO YOU
DISPOSE?**



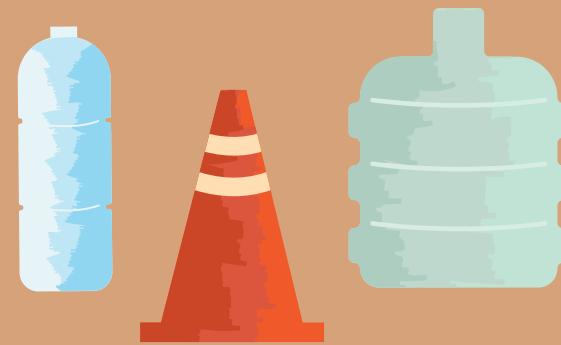
RECYCLING PROCESS

1



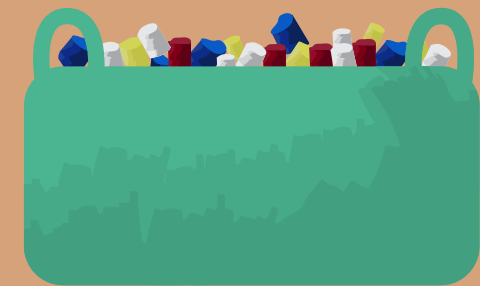
Collection

2



Sorting

3



Reprocessing

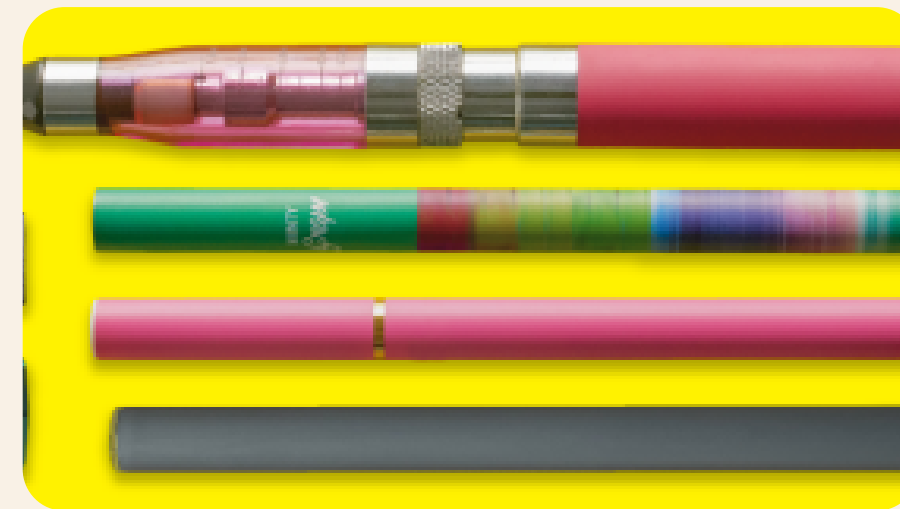
3 main steps of The Recycling Process

BE SAFE



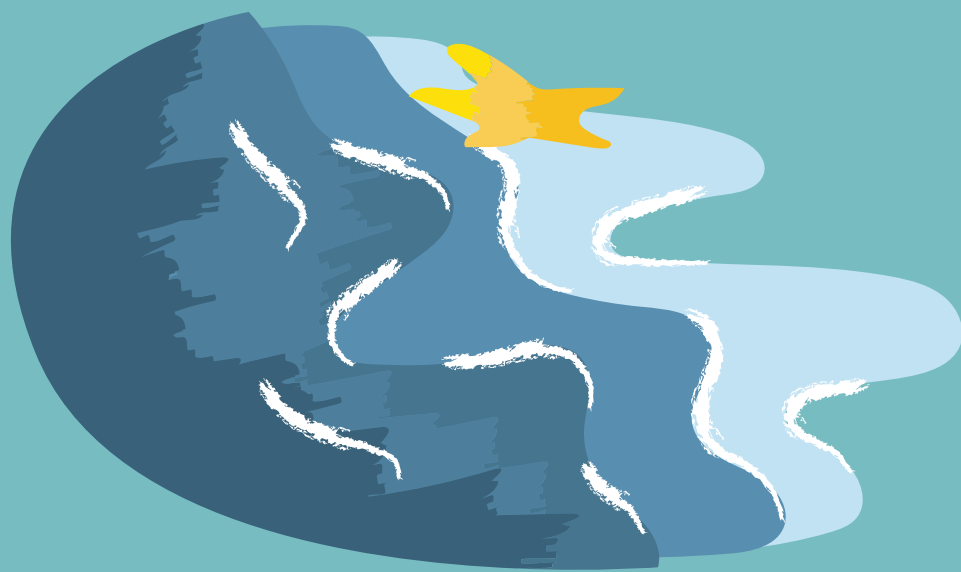
SAFELY DISPOSING OF
E-CIGARETTES INVOLVES HANDLING
THE BATTERIES AND E-CIGARETTES
APPROPRIATELY.

CONNECT WITH HHW



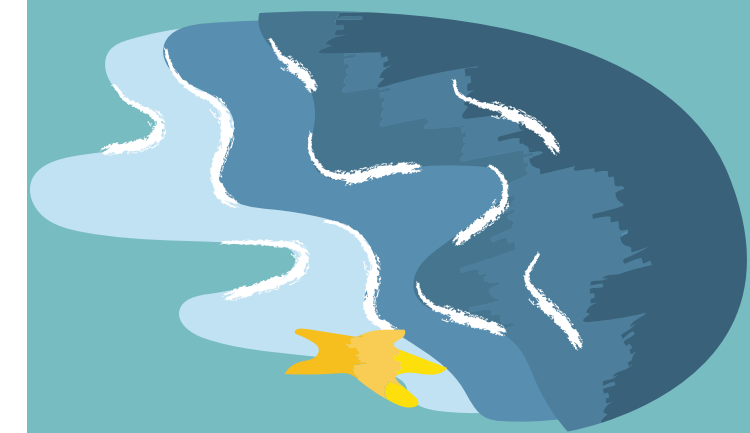
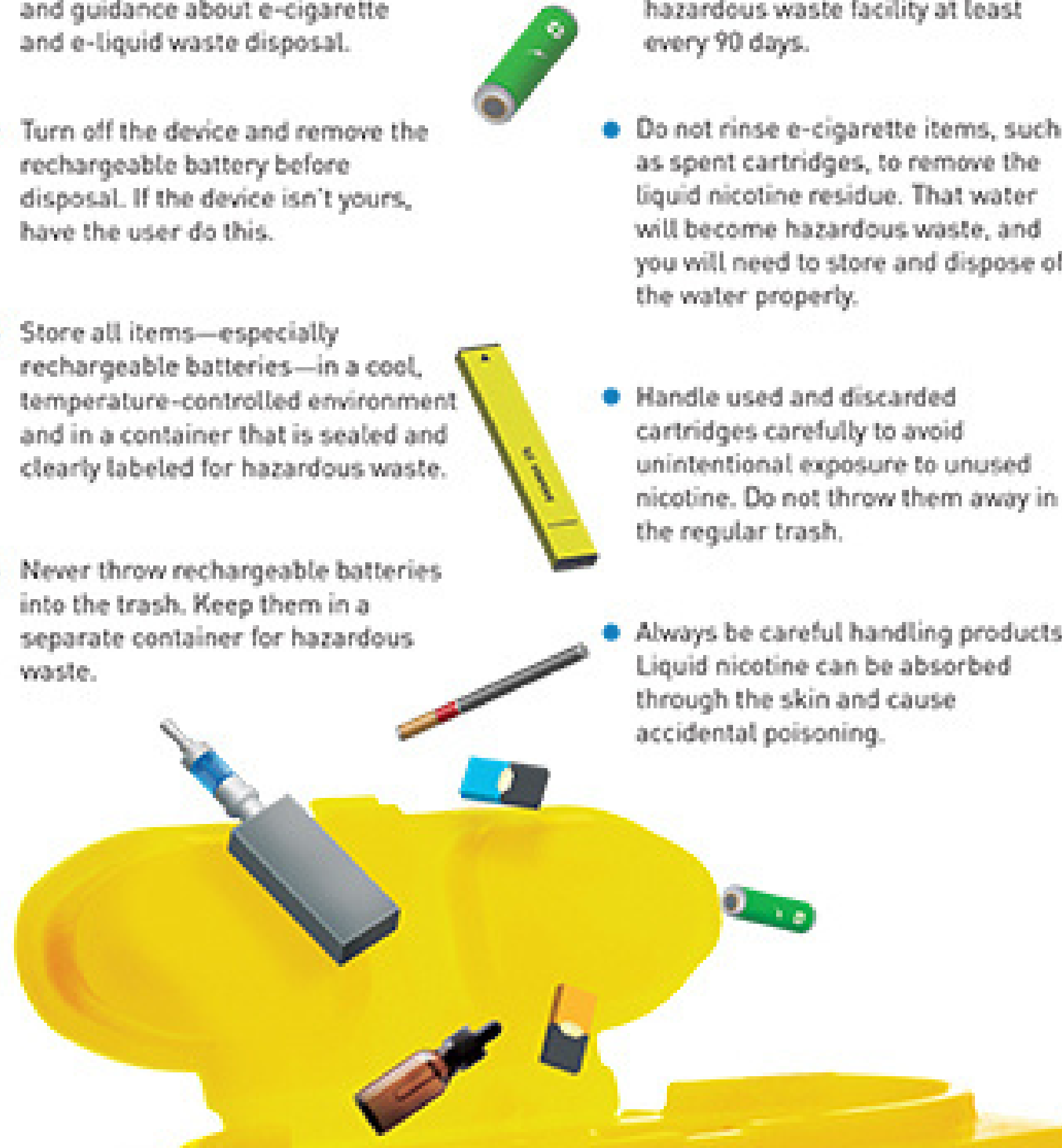
TO DISPOSE OF E-CIGARETTES: CONTACT LOCAL
WASTE DEPARTMENTS ABOUT THEIR HOUSEHOLD
HAZARDOUS WASTE (HHW) PROGRAM TO SEE IF
THEY ACCEPT E-CIGARETTES.

TIPS FOR SAFE DISPOSAL OF E-CIGARETTES AND E-LIQUID WASTE



Best Practices for Safe Disposal:

- Check with your state and local environmental agencies for rules and guidance about e-cigarette and e-liquid waste disposal.
- Turn off the device and remove the rechargeable battery before disposal. If the device isn't yours, have the user do this.
- Store all items—especially rechargeable batteries—in a cool, temperature-controlled environment and in a container that is sealed and clearly labeled for hazardous waste.
- Never throw rechargeable batteries into the trash. Keep them in a separate container for hazardous waste.
- Deliver the sealed container of e-cigarette waste to a local hazardous waste facility at least every 90 days.
- Do not rinse e-cigarette items, such as spent cartridges, to remove the liquid nicotine residue. That water will become hazardous waste, and you will need to store and dispose of the water properly.
- Handle used and discarded cartridges carefully to avoid unintentional exposure to unused nicotine. Do not throw them away in the regular trash.
- Always be careful handling products. Liquid nicotine can be absorbed through the skin and cause accidental poisoning.





WHAT ARE 7 R'S OF RECYCLING ?

1

Rethink

2

Refuse

3

Reduce

4

Reuse- NO!

5

Repair-NO!

6

Regift-NO!

7

Recycle



Our Local Vape Recycling Pilot Project



- * We have partnered with the Shawnee Mission School District and Johnson County Household Hazardous Waste in 2021-2022 to recycle all vape and vape products collected in the Shawnee Mission middle and high schools.

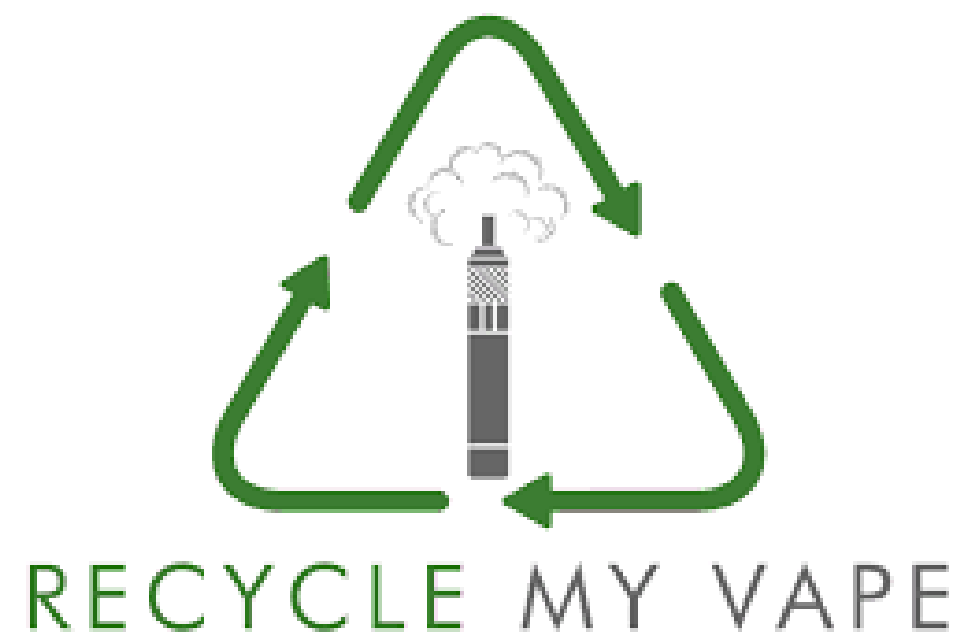


JOHNSON COUNTY
KANSAS
Health & Environment

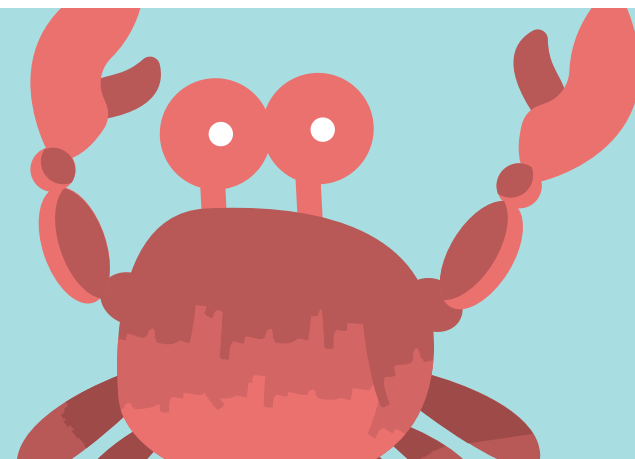


THANK YOU FOR RECYCLING VAPE

RESOURCE:
TRUTH INITIATIVE



CHROME-
EXTENSION://EFAIDNBMMNNIBPCAJPCGLCLEFINDMKAJ/VIEWER.HTML?
PDFURL=HTTPS%3A%2F%2FTRUTHINITIATIVE.ORG%2FSITES%2FDEFAULT%2FF
ILES%2FMEDIA%2FFILES%2F2021%2F03%2FE-CIGARETTE-WASTE-REPORT-
FINAL-031121.PDF&CLEN=2154696&CHUNK=TRUE





Health & Environment

Trent Thompson
Environmental Programs Manager
Trent.Thompson2@jocogov.org
913-715-6938

Micheline Krueger
Community Health Educator
Micheline.Krueger@jocogov.org
913-477-8384